



Novoste™

Vascular Brachytherapy for In-stent Restenosis

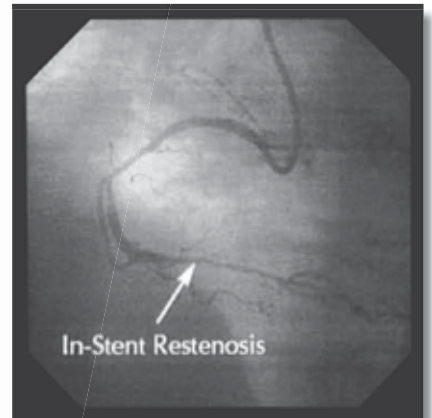
Available in 30 mm,
40 mm & 60 mm
Source Train Lengths

Beta-Cath™ 3.5F System

- Convenient & Minimal Dosimetry Calculations
- Portable & Reusable
 - Short Treatment Time (3-4 min)
 - 6F Guide Catheter Compatibility



VBT Designed
for the Cath Lab



In-Stent Restenosis



Post Brachytherapy

Please visit our website for IFU information.

© 2008–2019 TeamBest Companies



Best Vascular, Inc. 4350 International Blvd Norcross, Georgia 30093 USA
Tel: 770 717 0904 800 668 6783 www.novoste.com www.bestvascular.com

AFRICA | ASIA | EUROPE | LATIN AMERICA | MIDDLE EAST | NORTH AMERICA