



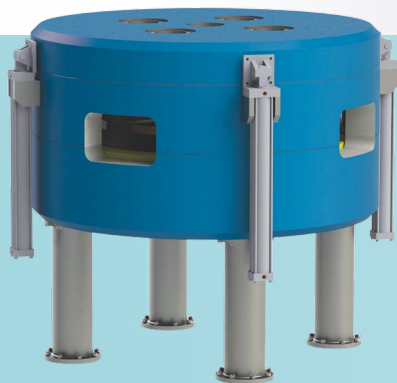
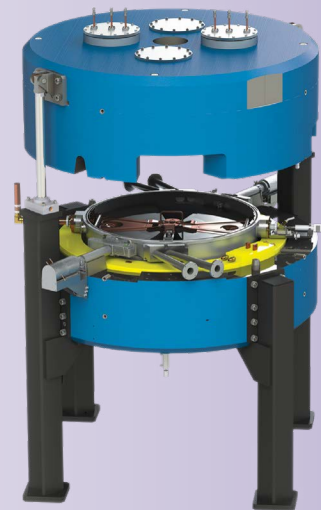
## NEW!

### BG-95 Sub-Compact Self-Shielded Cyclotron with Optional Second Chemistry Module and Novel Target

- Low energy compact system, can be placed next to PET/CT
- Easy to operate push-button graphic interface
- Automated quality control testing
- Ideal for Nuclear Cardiology/Oncology & other applications
- Capable of producing:  $^{18}\text{F}$ FDG,  $\text{Na}^{18}\text{F}$ ,  $^{18}\text{F}$ -MISO,  $^{18}\text{F}$ FLT,  $^{18}\text{F}$ -Choline,  $^{18}\text{F}$ -DOPA,  $^{18}\text{F}$ -PSMA,  $^{13}\text{N}$  and  $^{68}\text{Ga}$

## NEW! Best 6–15 MeV Compact High Current/ Variable Energy Proton Cyclotron

- 1–1000  $\mu\text{A}$  extracted beam current
- Capable of producing the following isotopes:  $^{18}\text{F}$ ,  $^{68}\text{Ga}$ ,  $^{89}\text{Zr}$ ,  $^{99\text{m}}\text{Tc}$ ,  $^{11}\text{C}$ ,  $^{13}\text{N}$ ,  $^{15}\text{O}$ ,  $^{64}\text{Cu}$ ,  $^{67}\text{Ga}$ ,  $^{111}\text{In}$ ,  $^{124}\text{I}$ ,  $^{225}\text{Ac}$  and  $^{103}\text{Pd}$
- Up to  $5 \times 10^{13}$  neutrons per second from external target
- 21 stripping foils at each stripping port for 2 minute rapid change



## NEW! Best Model B25p Cyclotron

- 25 and 20 MeV fixed energy H- cyclotron
- 400  $\mu\text{A}$  extracted proton beams
- 2 simultaneous extracted beams
- 4 target positions

TEAMBEST GLOBAL COMPANIES ©2023

## NEW! Best Model B35adp Alpha/Deuteron/ Proton Cyclotron for Medical Radioisotope Production and Other Applications

- **Proton Particle Beam:** 1000  $\mu$ A Beam Current up to 35 MeV Energy
- **Deuteron Particle Beam:** 500  $\mu$ A Beam Current up to 15 MeV Energy
- **Alpha Particle Beam:** 200  $\mu$ A Beam Current up to 35 MeV Energy



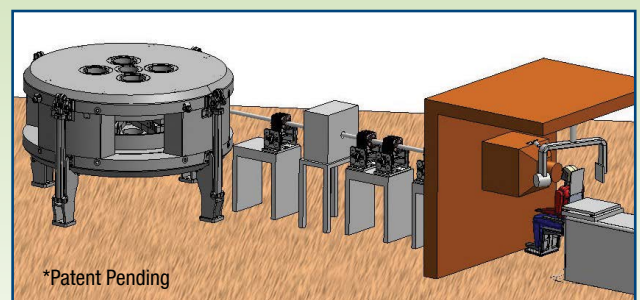
Installation of Best 70 MeV Cyclotron at INFN, Legnaro, Italy.

## B70 MeV Cyclotron Ideal for Sr-82/Rb-82 and Other Radioisotopes Production

- 35-70 MeV variable energy H-cyclotron
- 700  $\mu$ A extracted beam current (upgradable to 1000  $\mu$ A)
- 2 simultaneous extracted beams
- Multiple independent beam lines and target positions

## NEW! Best Model 200p Cyclotron for Proton Therapy\*

- From 70 MeV up to 200 MeV Non-Variable Energy
- Dedicated for Proton Therapy with two beam lines and two treatment rooms
- For all Medical Treatments including: Benign and Malignant Tumors, Neurological, Eye, Head/Neck, Pediatric, Lung Cancers, Vascular/Cardiac/ Stenosis/Ablation, etc.



\*Patent Pending



www.isrmmi.org

www.istro.net

\*Some products shown are under development and not available for sale currently.